

EX15 1150X560

CONVENIENT, EASY TO USE



EX15

The new EX15 Electric Pallet Truck is the economic solution for your daily light-duty logistic operation. Simple and easy to use thanks to the compact size, low weight, maintenance free AGM battery and on-board charger, the EX15 can carries loads up to 1500 kg also on rampes.



24V/65Ah



4,0/4,5 km/h



1500 kg



CONVENIENT

MANOEUVRABILITY

The overall width of the machine matches with the fork width (540 mm).

This makes the unit as compact as possible and, together with the reduced turning radius (1485 mm), enables to work in narrow spaces.



ROBUSTNESS

Robust frame designed to guarantee maximum durability and resistance to torsion and loads.

Fork tips shaped for an easier entrance/exit on the closed side of the pallet.



SAFETY

Emergency push button, belly button and electrobrake are the standard safety features of the machine.

The cover for driving wheel protects the operator's feet during work and secures the truck's components from collision with objects.



ON-BOARD BATTERY CHARGER

Built-in battery charger provides a convenient charging solution and eliminates the need to remove the battery from the machine.

The on-board spiral cable and plug allow the battery charging on every schuko socket.



TILLER

Fully integrated ergonomic technopolymer tiller with key switch, including fingertip throttle and fork controls, safety pushbutton, horn, and display showing battery status BDI and trouble shooting as standard equipment.



EASY MAINTENANCE

Simple construction with a design that allows a really easy maintenance.

The access to motorwheel and the battery compartment can be done just removing few bolts and without lifting the unit.



Descriere

1.1 Producător			PR INDUSTRIAL
Stivuitoar			ELECTRICĂ
1.3 Comandă			ELECTRICĂ
1.4 Poziție operare			Pedestru
1.5 Capacitate maximă	Q	Kg	1500
1.6 Distanța la centrul de aplicare al sarcinii	c	mm	600
1.8 Sarcina de la osie la capătul furcilor	x	mm	883
1.9 Ampatament	y	mm	1202

Greutăți

2.1 Greutate de operare		Kg	195
2.2 Sarcină osie, încărcare pe spate		Kg	1128
2.2 Sarcină osie, încărcare pe față		Kg	567
2.3 Sarcină osie, liber față		Kg	155
2.3 Sarcină osie, liber spate		Kg	40

Cauciucuri/Șasiuri

3.2 Mărime cauciuc: roți direcție - Lățime		mm	70
3.2 Mărime cauciuc: roți direcție - Diametru		mm	210
3.3 Mărime cauciuc: transportoare cu role - Diametru		mm	78
3.3 Mărime cauciuc: transportoare cu role - Lățime		mm	88
3.5 Dimensiune cauciuc: roți spate		nr	2
3.5 Dimensiune cauciuc: roți fata		nr	1x
3.6 Ecartament, față	b10	mm	448
3.7 Ecartament, spate	b11	mm	410

Dimensiuni

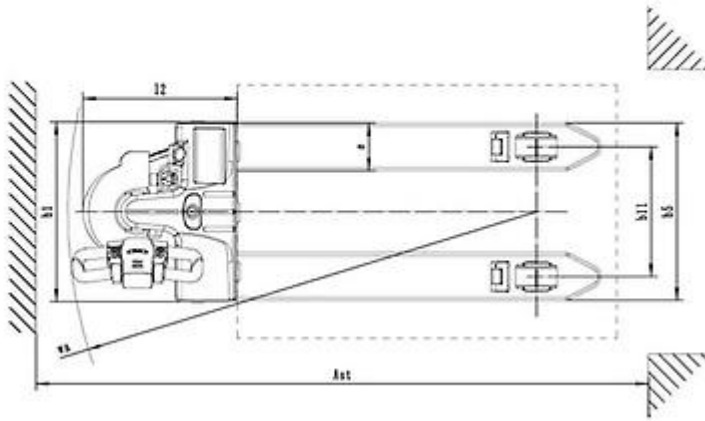
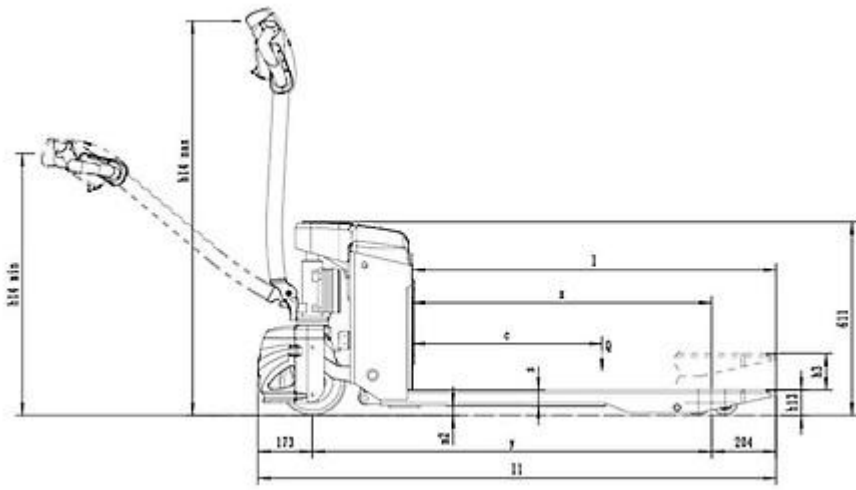
4.4 Înălțime stivuitoar	h3	mm	115
4.9 Height of tiller in drive position min	h14	mm	750
4.9 Înălțime manetă în poziția de deplasare, max	h14	mm	1170
4.15 Înălțime, coborât	h13	mm	80
4.19 Lungime globală	l1	mm	1638
4.20 Distanța până la suprafața frontală a furcilor	l2	mm	488
4.20 Distanța până la suprafața frontală a furcilor cu platforma coborâtă	l2	mm	488
4.21 Lățime globală	b1	mm	560
4.22 Dimensiuni furcă - grosime	s	mm	50
4.22 Dimensiuni furcă - Lățime	e	mm	150
4.22 Dimensiuni furcă - Lungime	l	mm	1150
4.25 Distanța între furci	b5	mm	560
4.32 Gardă la sol și mijloc ampatament	m2	mm	30
4.34 Lățime culoar	Ast	mm	1939
4.35 Rază de virare	Wa	mm	1485

Performante

5.1 Viteză de deplasare cu incarcare	Km/h	4,0
5.1 Viteză de deplasare fără incarcare	Km/h	4,5

Motoare electrice

6.6 Consum de energie în ciclu VDI	kWh/h	0,28
8.4 Nivel sonor la nivelul urechii șoferului	dB(A)	74



The information is aligned with the Data file at the time of download. Printed on 24/02/2020 (ID 11228)

©2019 | PR INDUSTRIAL s.r.l. | All rights reserved | Image shown may not reflect actual package. Specifications subject to change without notice

